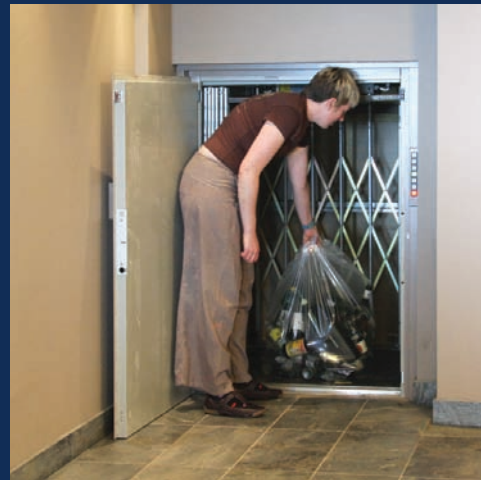


Trolleylift

250kg - 300kg Service Lifts



**The versatile goods lift for simple, quick,
reliable and economical movement
of heavy goods.**



- 1 Quiet and efficient powerful motor
- 2 Easy-clean finish
- 3 Galvanised framework for long life
- 4 Interlocked entrances for extra safety
- 5 Hinged doors or concertina shutter leaf gate
- 6 Robust push buttons, fully automatic control
- 7 Low pit or ramp by others
- 8 Structure supported frame

Options:

- Galvanised concertina shutter leaf gates in place of standard hinged doors
- Collapsible picket gate, electronically interlocked for safety, to protect loads during travel.

A versatile goods lift for larger, bulky or heavier loads. They protect you and your staff from the stresses and strains of manual handling. Installing a goods lift means you distribute goods quickly, efficiently and safely between floors. The lifts require only a shallow pit and come in their own structure, so they slot in almost anywhere and are economical to run.

Choice of models

Whether you are lifting beer barrels, sack barrows, large roll containers or washing machines, you can choose between the 250kg or 300kg models to suit your exact lifting requirements.

Quick, simple installation

The lift operates inside a rapidly-erected, structure supported frame which is easy to install and requires minimal builder's work. No separate motor room or load-bearing shaft is needed, which helps to keep costs down.

Available from stock

Both models are normally available from stock, which means that a lift can be installed and working within a few days, depending on the building work. Please contact us for further information.

Easy handling

Up to three-way entry on every floor to offer the most convenient access positions.

Landing entrances

The lift can be supplied with either single hinged doors with grey baked enamel or stainless steel finish, or galvanised concertina shutter leaf gates.

Car entrance protection

To protect loads during travel a collapsible picket gate, electronically interlocked for safety, is available if required.



Space-saving concertina shutter leaf gate – can be installed as an optional extra.



Technical specifications

TECHNICAL DATA - 250kg MODELS

Model	Capacity	Car Dimensions (w x d x h)	Entrance (w x h)	Shaft (w x h)	Pit Depth	Headroom
250H	250kg	1000 [†] x 1000 [†] x 1200	900 [†] x 1200	1320 x 1320	150*	2600*
250HP	250kg	1000 [†] x 950 [†] x 1175	770 [†] x 1090	1320 x 1320	175*	2600*
250C	250kg	1000 [†] x 1000 [†] x 1200	900 [†] x 1200	1320 x 1320	150*	2600*
250CP	250kg	1000 [†] x 950 [†] x 1175	770 [†] x 1090	1320 x 1320	175*	2600*

TECHNICAL DATA - 300kg MODELS

Model	Capacity	Car Dimensions (w x d x h)	Entrance (w x h)	Shaft (w x h)	Pit Depth	Headroom
300H	300kg	1000 [†] x 1000 [†] x 1800	900 [†] x 1800	1320 x 1320	600	3000
300HP	300kg	1000 [†] x 950 [†] x 1775	770 [†] x 1690	1320 x 1320	600	3000
300C	300kg	1000 [†] x 1000 [†] x 1800	900 [†] x 1800	1320 x 1320	600	3000
300CP	300kg	1000 [†] x 950 [†] x 1775	770 [†] x 1690	1320 x 1320	600	3000

Notes:

All dimensions are nominal and in mm.

* Pit & Headroom

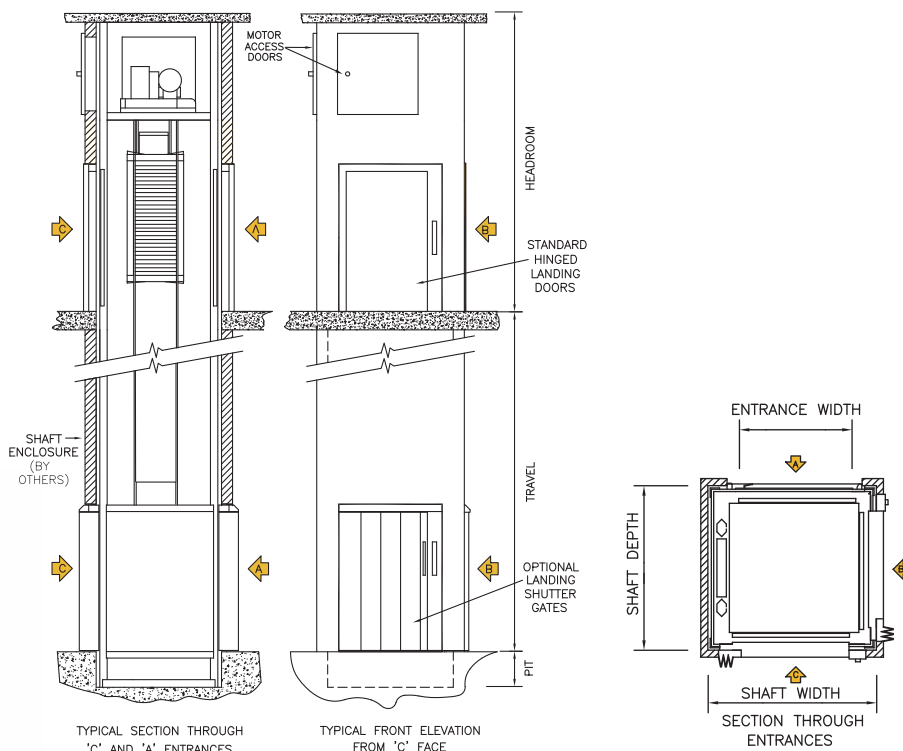
The lift normally serves at floor level and would require a pit at lowest floor or a ramp will need to be provided by your builder.

† Collapsible gates

When the lift car is fitted with collapsible gates on a through or adjacent entry arrangement, the car depth and width are reduced by a further 50mm nominal.

Key to model codes

- H – Hinged landing door
- HP – Hinged landing door with internal picket gate
- C – Concertina landing gate
- CP – Concertina landing gate with internal picket gate



Choice of entrance arrangements

Up to three way entry is possible, offering maximum access to the lift.



Elevators Ltd

Clarendon Business Centre, 21/23 Elmfield Rd, Bromley, BR1 1LT

Telephone: 020 8315 6738

Email: info@elevatorsltd.co.uk

www.elevatorsltd.co.uk

Brief specification

Builder's work:

Preliminaries

The lift can be installed by our fitters in just a few days with the minimum disruption to premises. Preliminary builder's work is straightforward. All that is normally required prior to installation is an appropriately-sized opening in each floor, a flat level base capable of supporting downward deadloads and an electrical power supply.

We can provide your builder with exact builder's work details and drawings for your installation and, where necessary, liaise directly with the builder to ensure the whole operation runs smoothly.

After the installation

Your builder will need to provide an enclosure around the lift to protect against moving parts and conform with your local fire regulations. Permanent safe access to the motor must be provided to comply with current safety regulations. The lift installation and associated builder's work should comply with the latest Supply of Machinery (Safety) Regulations and be 'CE' marked accordingly.

Installation notes:

Headroom: This is the floor to ceiling height at the top floor served.

Shaft: These dimensions give the minimum inside shaft width and depth that must be provided to enable the lift to be installed.

Pit: The lift normally serves level with the floor and a pit would be required at the bottom floor served.

If you are unable to provide a pit, the 250kg model can be installed to serve at 150/175mm above the lowest floor and the 300kg model can be installed to serve at 600mm above the lowest floor. A ramp will need to be supplied by your builder.

Some of the pit and headroom dimensions can be altered – please contact us for details.

Load:	250kg and 300kg.
Car:	Constructed in mild steel, finished in a tough grey baked enamel. A stainless steel finish is available as an option.
Landing Entrances:	Landing entrances are protected by a single hinged steel door with a grey baked enamel finish as standard (a stainless steel finish is available as an option) or optional concertina shutter leaf gates with a galvanised finish. All doors are fitted to our structure and have safety locks to comply with safety regulations.
Car Entrance Protection:	Whilst it is not essential to fit a collapsible gate to the car on lifts with single entry configurations, it is highly recommended to do so. However, they must be fitted on any lifts with entrance positions on opposite or adjacent sides.
Mounting:	The lift is supplied in a structure-supported frame which is galvanised for longer life. We do not require a separate motor room or 'load-bearing' lift shaft.
Floors served:	Can serve up to 6 floors.
Entry choice:	Up to 3 entrances can be fitted on each floor.
Speed:	0.17m/s.
Controls:	Fully automatic push button control, with call and despatch facilities at each entrance for extra reassurance.
Operation:	The operation is smooth and quiet with a highly efficient motor winding unit and reliable controller. Combined with a counter-balance drive system, this ensures electrical consumption is minimal.
Winding Unit:	Mounted at the top of the lift structure within the headroom dimensions shown overleaf. The motor drives a high quality reduction gearbox fitted with a traction vee-sheave. An electro-magnetic disc brake is supplied, with emergency release mechanism.
Electric Supply:	415 Volt-3 phase-50Hz. A 16 amp isolator should be supplied for the lift by your electrician to be fixed adjacent to the lift at the top floor served.
Installation:	A 2-floor lift normally takes 2-3 days to install depending on site conditions.
Delivery:	Normally available from stock.
Enclosure:	Normally by others.
Maintenance:	We recommend the lift is serviced and inspected every 3 months by competent lift engineers. This is to ensure efficient and reliable operation. We can arrange servicing after installation.
Guarantee:	The lift is guaranteed for twelve months from completion of installation, subject to it being serviced regularly by our engineers.
Policy:	We are continually developing and improving our product range and reserve the right to alter specifications, dimensions and prices without prior notice.
Safety:	Once installed, tested, commissioned and all the building work is complete, the lift will comply with the Essential Safety Regulations (ESRs) of the latest Supply of Machinery (Safety) Requirements, otherwise known as the Machinery Directive and EN81-3 where applicable.

Elevators Ltd

Clarendon Business Centre, 21/23 Elmfield Rd, Bromley, BR1 1LT

Telephone: 020 8315 6738

Email: info@elevatorsltd.co.uk

www.elevatorsltd.co.uk

